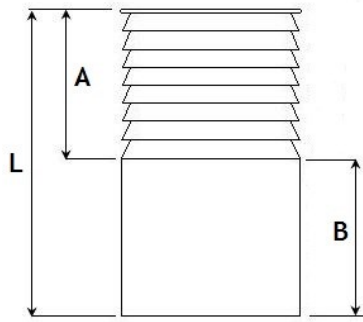
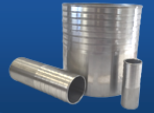




Berkeley Stainless Fittings Limited

Hosetails & OD End Caps



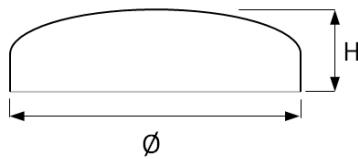
PLAIN ENDED HOSETAILS 316

	1/2"	3/4"	1"	1.25"	1.5"	2"	2.5"	3"	4"	5"	6"
Stock Code	0980205	0980207	0980210	0980213	0980215	0980220	0980225	0980230	0980240	0980250	0980260
A	25	25	50	50	50	50	50	50	50	85	85
B	25	25	50	50	50	50	50	50	50	65	65
L	50	50	100	100	100	100	100	100	100	150	150
Thickness	1.5	1.5	1.5	1.5	1.5	1.5	1.5	1.5	2	2	2

MADE FROM 316 STAINLESS STEEL TUBE.

SPECIAL LENGTHS & SIZES CAN BE PRODUCED UPON REQUEST.

ALTERNATIVE ENDS OF YOUR CHOICE CAN BE FITTED .



OD END CAP 316

	1"	1.5"	2"	2.5"	3"	4"
Stock Code	0980535	0980540	0980545	0980550	0980560	0980580
Ø	25	38	51	63.5	76.1	101.6
H	12	15	19	19	27	24.5
Thickness	1.6	1.6	1.6	1.6	1.6	2

OD END CAPS ARE A DESCALED FINISH AS STANDARD IN GRADE 316.

END CAPS CAN BE POLISHED ON A SHORT LEAD TIME.

METRIC CAPS ALSO STOCKED.