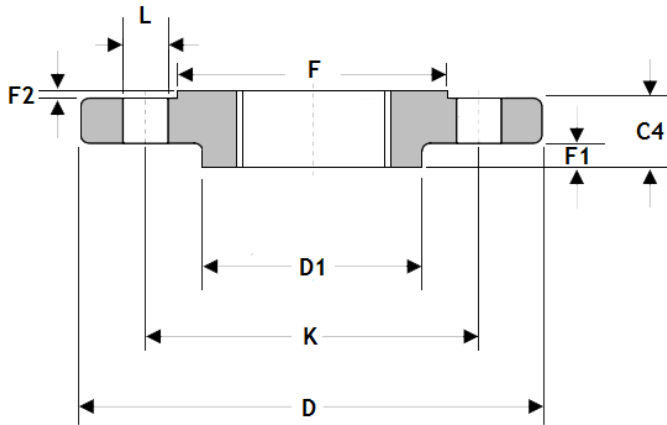
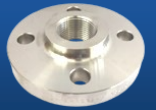




Berkeley Stainless Fittings Limited

# EN1092-1 PN16 BSPP Bossed Flange



## PN16/113 BSPP THREADED R/F BOSSED FLANGE - GRADE 316

	1/2"	3/4"	1"	1.25"	1.5"	2"	2.5"	3"	4"
<b>Stock Code</b>	0803005	0803007	0803010	0803015	0803020	0803025	0803027	0803030	0803040
<b>D</b>	95	105	115	140	150	165	185	200	220
<b>K</b>	65	75	85	100	110	125	145	160	180
<b>D1</b>	35	45	50	60	70	84	104	118	140
<b>F</b>	45	58	60	70	80	102	110	128	148
<b>F2</b>	3	3	4	5	5	5	6	6	6
<b>L</b>	14	14	14	18	18	18	18	18	18
<b>C4</b>	20	24	24	26	26	28	32	34	40
<b>F1</b>	6	8	8	8	8	10	14	14	20
<b>HOLES</b>	4	4	4	4	4	4	4	8	8
<b>Bolts</b>	M12 x 45	M12 x 50	M12 x 50	M12 x 50	M16 x 55	M16 x 60	M16 x 60	M16 x 60	M16 x 65

MANUFACTURED TO EN1092-1  
PARALLEL THREAD TO SUIT BSP MALE - BSPT AVAILABLE ON SHORT LEAD-TIME.  
PREVIOUSLY MANUFACTURED TO BS4504 - PN16/4

ASA150 & BS10 TABLE E BSP SCREWED CAN ALSO SUPPLIED ON A SHORT LEAD-TIME

## FLANGE GASKETS

Flange Size	Flange	Type	Material
1" OD - 8" OD	PN16	IBC	White Food Grade Rubber 3mm Thick
1" OD - 8" OD	PN16	Full Face	White Food Grade Rubber 3mm Thick
1" NB - 8" NB	PN16	IBC	Black EDPM - 3mm Thick
1/2" NB - 10" NB	PN16	Full Face	Black EDPM - 3mm Thick
1" NB - 8" NB	PN16	IBC	Compressed Fibre
1" NB - 4" NB	PN16	IBC	316 ST/ST Corrugated Taylor Ring

