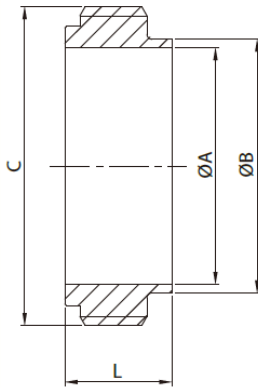


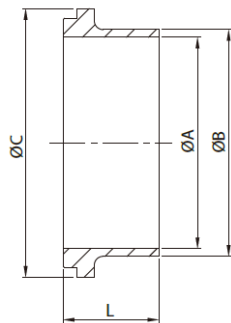
IDF HEX NUT 304

	1"	1.5"	2"	2.5"	3"	4"
Stock Code	0202010	0202015	0202020	0202025	0202030	0202040
ØA	30.5	43.5	57	70.7	83.3	112
B	34.49 x 8T ACME	48.01 x 8T ACME	61.52 x 8T ACME	75.03 x 8T ACME	88.55 x 8T ACME	122.2 x 6T ACME
C	46	60	75	90	105	133
L	30	30	30	30	30	34.9



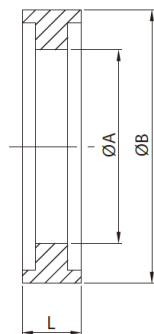
IDF WELD MALE 316

	1"	1.5"	2"	2.5"	3"	4"
Stock Code	0202410	0202415	0202420	0202425	0202430	0202440
A	22.1	34.8	47.5	60.2	72.9	97.6
B	25.4	38.1	50.8	63.5	76.2	101.6
C	36.97 x 8T ACME	50.49 x 8T ACME	64.00 x 8T ACME	77.51 x 8T ACME	91.03 x 8T ACME	125.69 x 6T ACME
L	21.5	21.5	21.5	21.5	21.5	30



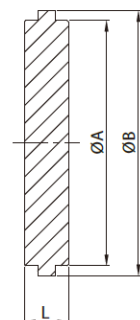
IDF WELD LINER 316

	1"	1.5"	2"	2.5"	3"	4"
Stock Code	0202210	0202215	0202220	0202225	0202230	0202240
ØA	22.1	34.8	47.5	60.2	72.9	97.6
ØB	25.4	38.1	50.8	63.5	76.2	101.6
ØC	33.8	47	60.5	74	87.5	120.6
L	21.5	21.5	21.5	21.5	21.5	30



IDF JOINT RING

	1"	1.5"	2"	2.5"	3"	4"
Nitrile Code	0202610	0202615	0202620	0202625	0202630	0202640
EPDM Code	0202642	0202644	0202645	0202647	0202648	0202649
ØA	23	36	49	60.7	73.2	98
ØB	32.5	46	59.5	73.2	86.5	119.6
L	7	7	7	7	7	7



IDF BLANK LINER 316

	1"	1.5"	2"	2.5"	3"	4"
Stock Code	0203010	0203015	0203020	0203025	0203030	0203040
ØA	29.2	42.7	56.2	69.9	82.6	111.1
ØB	33.8	47	60.5	74	87.5	120.6
L	10.5	10.5	10.5	10.5	10.5	12.6